

BUSSELTON COURT

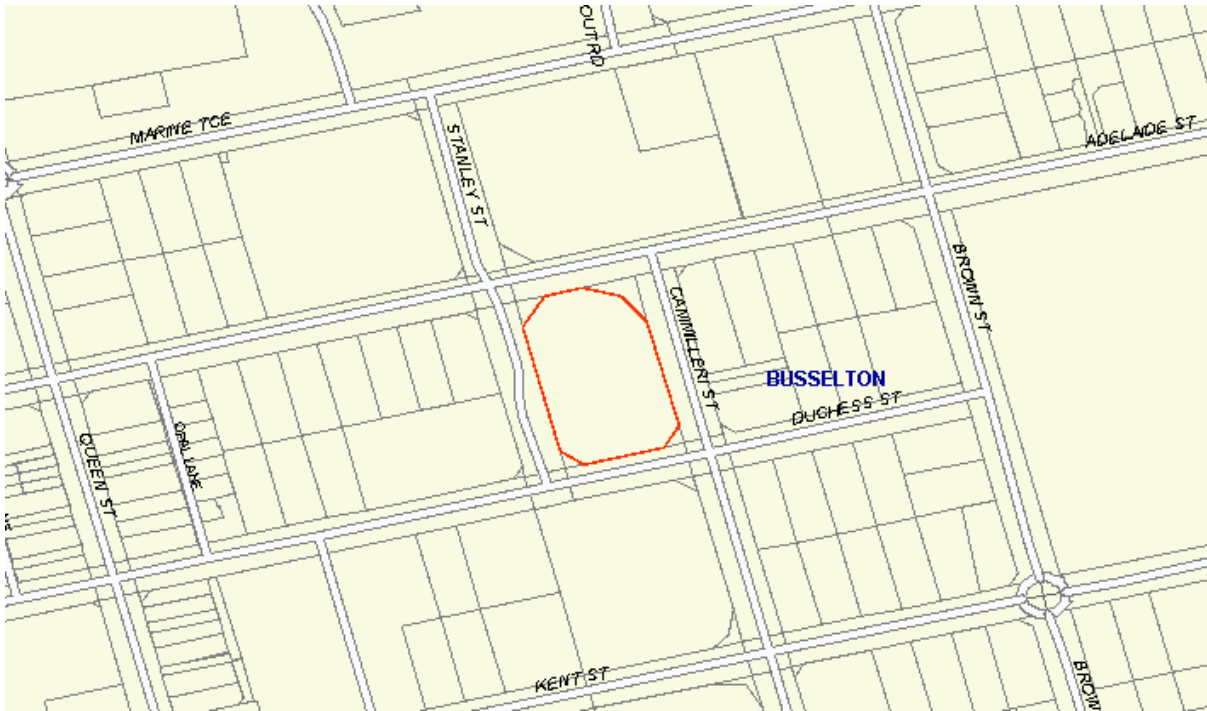
Address: 12 Stanley Street, BUSSELTON 6280

Contact Details:

Telephone: (08) 9754 9666

Facsimile: (08) 9752 4950

Email: busseltoncourt@justice.wa.gov.au



Parking Availability:

Parking is available in the car park opposite the Police Station, located next to the Court.

Assembly Instructions:

Jurors are requested to assemble in the court waiting area.

Food:

There are many cafes/lunch bars within walking distance of the Court.